

CH34XUSB-SERIAL DRIVER INSTALLATION INSTRUCTIONS

Version:V2.0

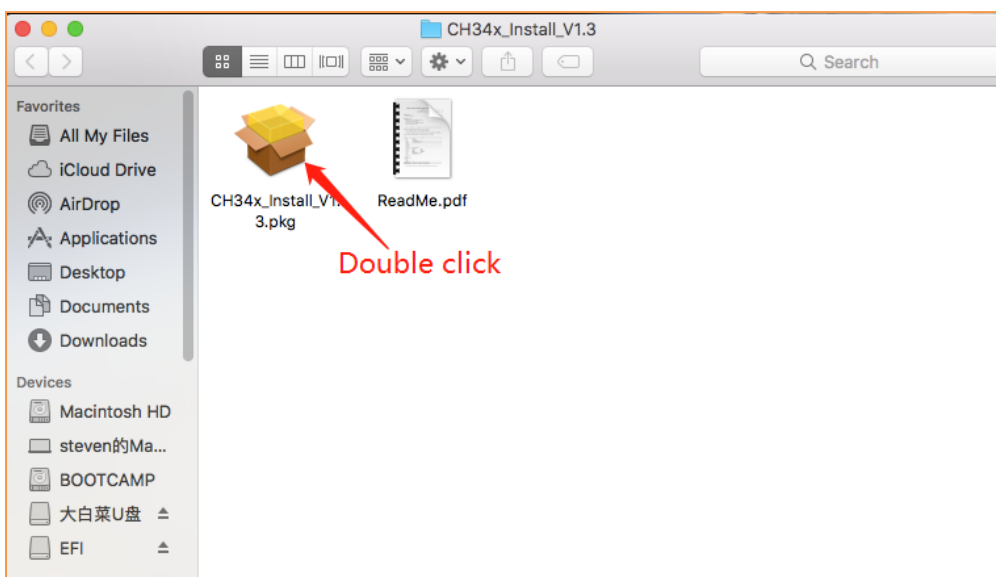
SupportSystem:

OSX10.9andabove

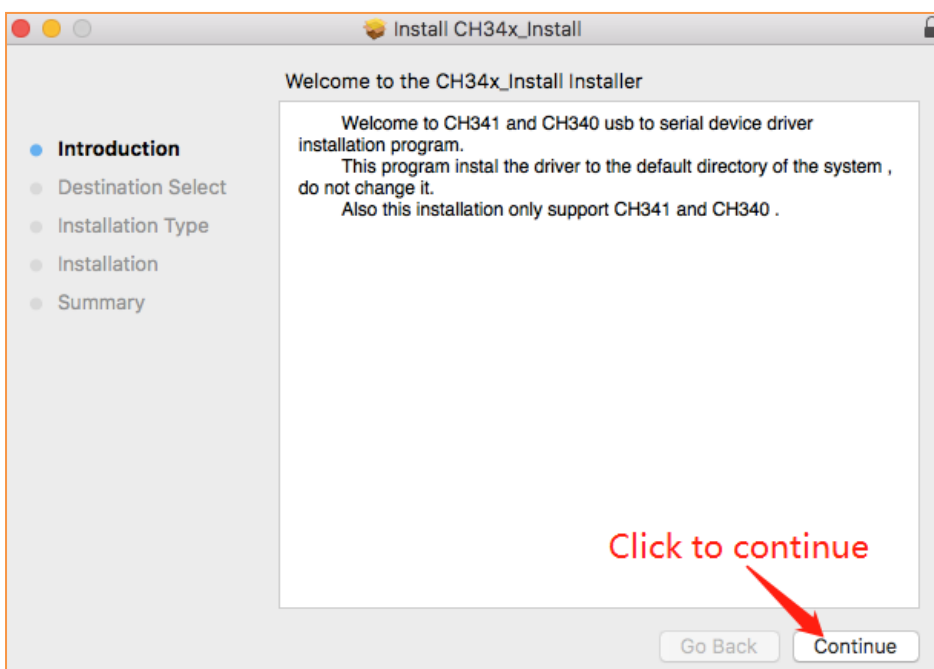
InstallationProcess:

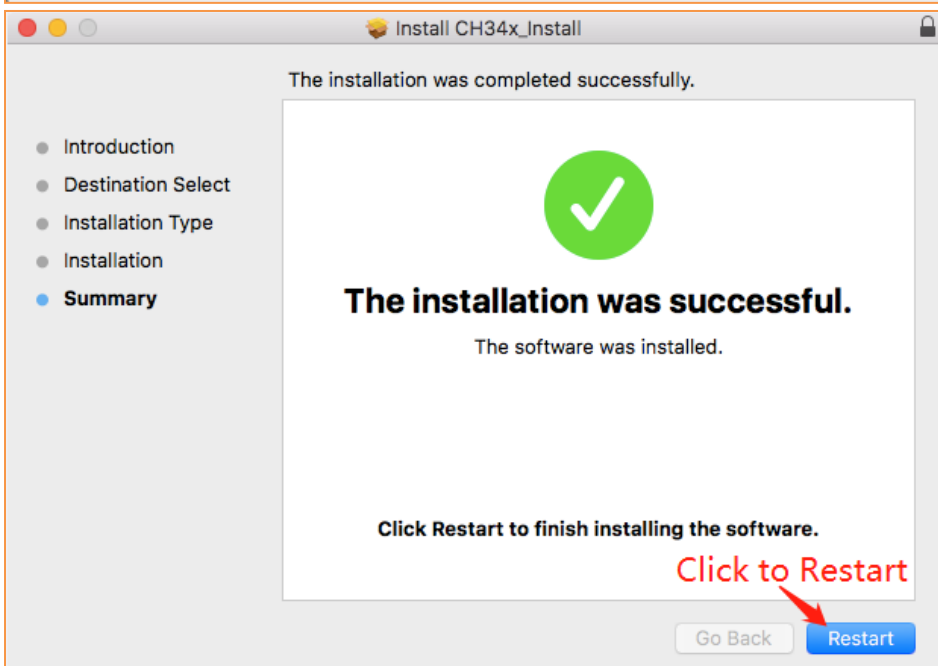
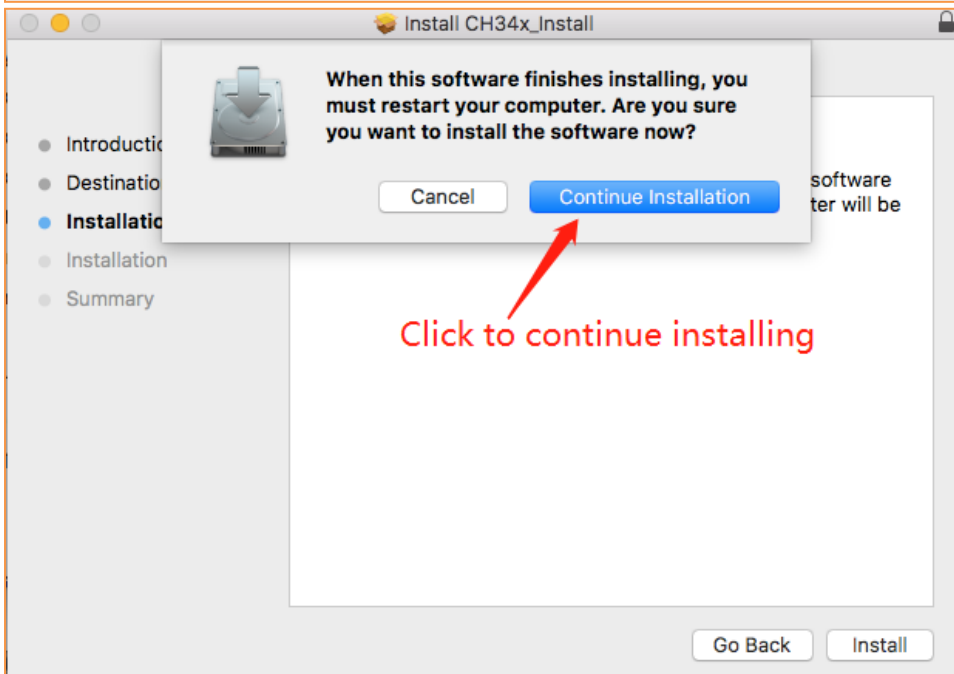
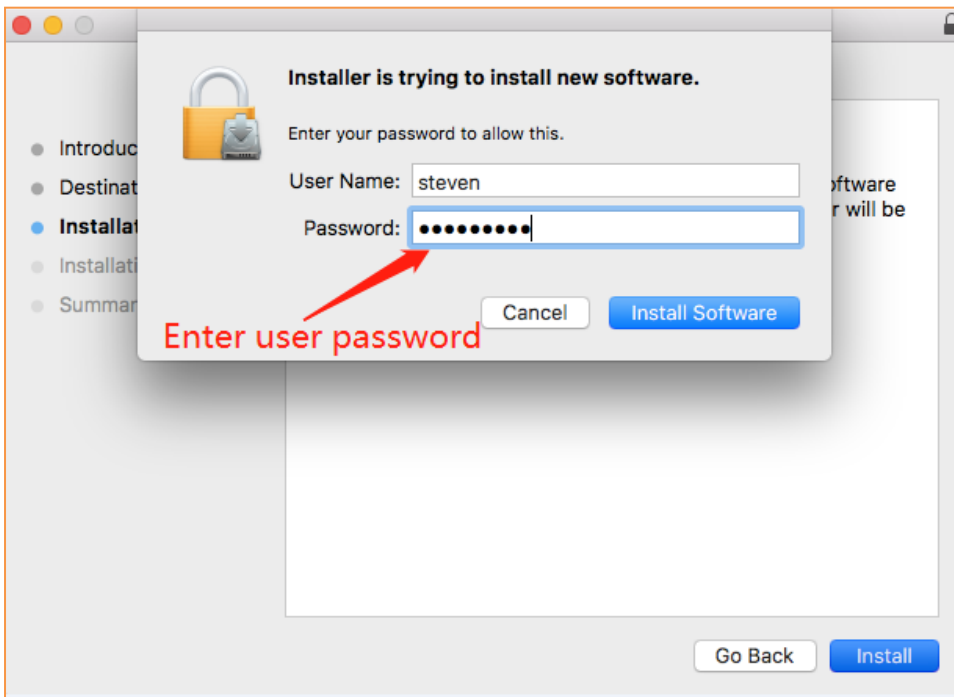
Extract the contents of the zip file to a local installation directory

Double-clickCH34x_Install.pkg



Install according to the installation on procedure



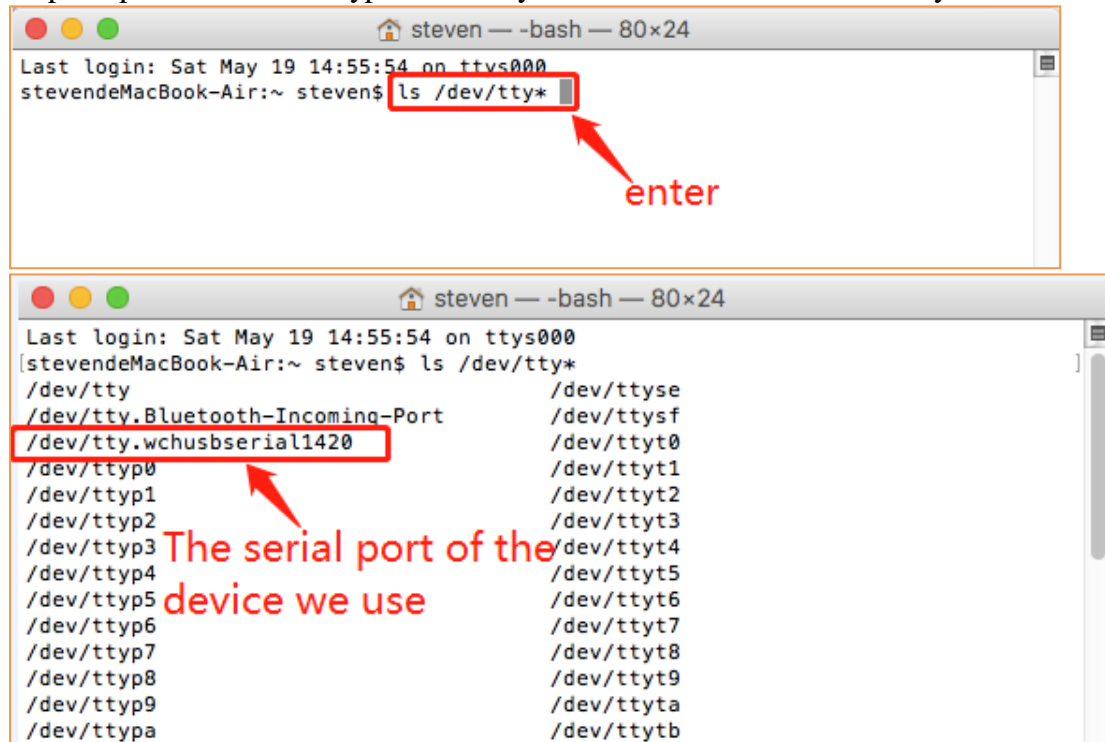


Restart after finishing installing

After the installation is completed, you will find serial device in the device list(/dev/tty.wchusbserial*) ,and you can access it by serial tools.

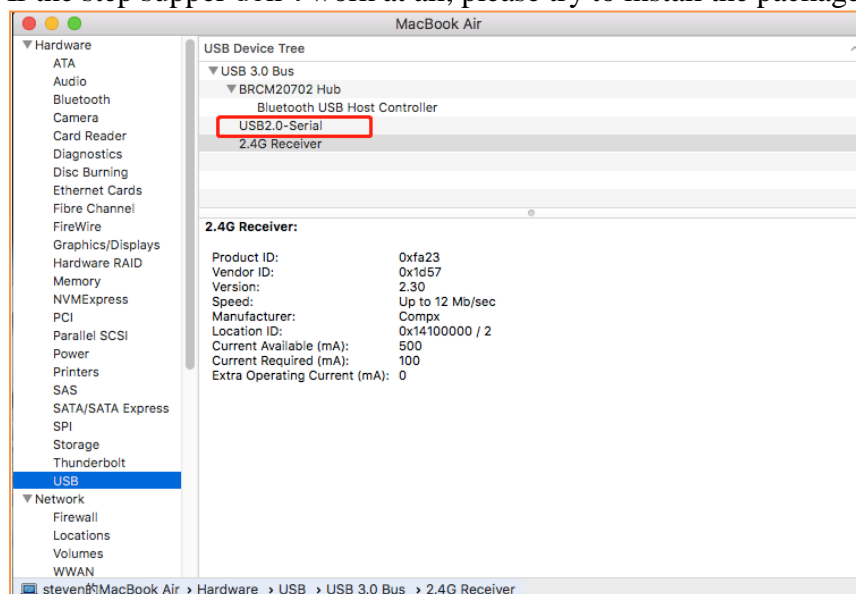
If you can't find the serial port then you can follow the steps below:

Step1: Open terminal and type 'ls/dev/tty*' and see is there device like tty.wchusbserial;



Step2: Open 'System Report' -> Hardware -> USB, on the right side "USB Device Tree" there will be device named "Vendor-Specific Device" and check if the Current is normal.

If the step supper don't work at all, please try to install the package again.



Note:

Please enter "System Preferences" -> "Security & Privacy" -> "General", below the

title "Allow apps downloaded from:" you should choose the choice2 -> "Mac App Store" and

identified developers ” so that our driver will work normally.

